

NHtop

Better manage paper and electronic patient records

NHtop

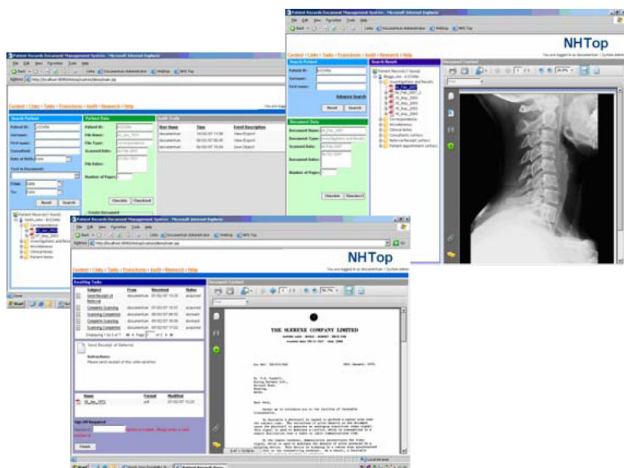
NHtop is a clinical solution created by SWORD and is powered by Documentum. Its intuitive user interface has been specifically designed for use within NHS Trusts, enabling Trusts to face the challenges of managing millions of paper records.

This solution is compatible and complimentary to the national program and allows Trust's to better manage the paper and electronic patient records as well as providing a world class content management infrastructure for future IT initiatives.

The product has been designed to be rapidly implemented, in many cases in less than 2 weeks, as part of a complete content management system. This includes providing a 'front-end' scanning solution to electronically scan patients' records or any other document or image into the system. The workflow capability within the solution ensures that requests for additional information from other departments are tracked and a full audit trail is maintained.

NHtop integration capabilities

NHtop has excellent integration characteristics enabling it to be integrated with other Trust systems,

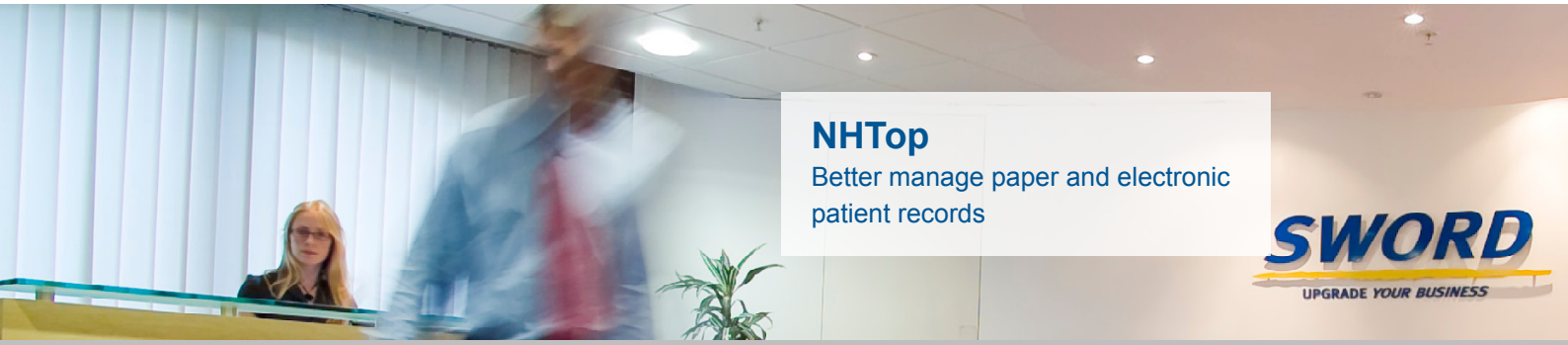


thereby bringing all the Trust's applications into one space producing a holistic view of the patient, thereby improving efficiency and reducing operating costs.

It can also be used to provide 'Research' facilities, with the results saved into the EMC Documentum system through NHtop.

Benefits

- **NHtop is powered by Documentum, EMC's worldleading Enterprise Document Management platform already used by over 3,000 companies worldwide**
- **Documentum has been recommended as the document management solution of choice for the NHS National Program**
- **Documentum and NHtop easily scale from a single user to enterprise deployments with thousands of users, whilst providing quick secure access to millions of documents**
- **NHtop provides access to electronic patient records via an easy to use interface and seamless integration to other clinical applications**
- **Documents are stored with full access control, unalterable audit trails and the facility to set retention periods**
- **Standard integration with EMC Centera ensures that content is held in a tamper proof digital safe**
- **SWORD UK's expert consultancy is used to provide the Feasibility Studies on document management and the digitisation of patients' records and to validate all of the benefits from an NHtop implementation platform.**



NHTop

Better manage paper and electronic patient records

Feasibility Study

Our approach to document management solutions for Trusts is to work with the Trust fully understand their requirements by undertaking a feasibility study including a full volumetric analysis of the Trust's existing patients' records, integration requirements and infrastructure design.

The outcome of this study is a comprehensive report detailing the results of our investigations and gives the Trust a number of appropriate solution alternatives identifying the functionality required to fulfil their specific requirements. In addition we also include a return on investment analysis enabling Trust's to identify the financial benefits NHTop and digitised paper records can provide.

Solution

Selected patient records are scanned and are viewed through a browser for ease of deployment and access. It uses EMC Documentum EDMS (Enterprise Document Management System) as the underlying document management system. Documentum provides the secure repository to manage trusted content.

Any file can be managed as content including scanned images in Portable Document Format (PDF) or jpeg, Word, Excel, DICOM, audio and video files. The only requirement is that the viewing system is able to display or playback the content.

Patient records can be scanned on site or via a bureau service, both can be managed by market leading scanning software. This software provides a highly configurable and flexible application that fully integrates into the core Documentum system.

In providing this solution, SWORD works in partnership with all stakeholders, including: clinical personnel, IT staff, administrative & records management personnel. SWORD also works closely with the Trust's preferred infrastructure supplier, to ensure that the architecture used is in line with Trust's policies.

For further information:

1000 Great West Road

Brentford, Middlesex

TW8 9DW

Tel +44 (0) 20 8232 25 55

Fax +44 (0) 20 8232 93 88

www.sword-group.com

NHtop@sword-uk.com

