

# Current State Assessments (CSA)

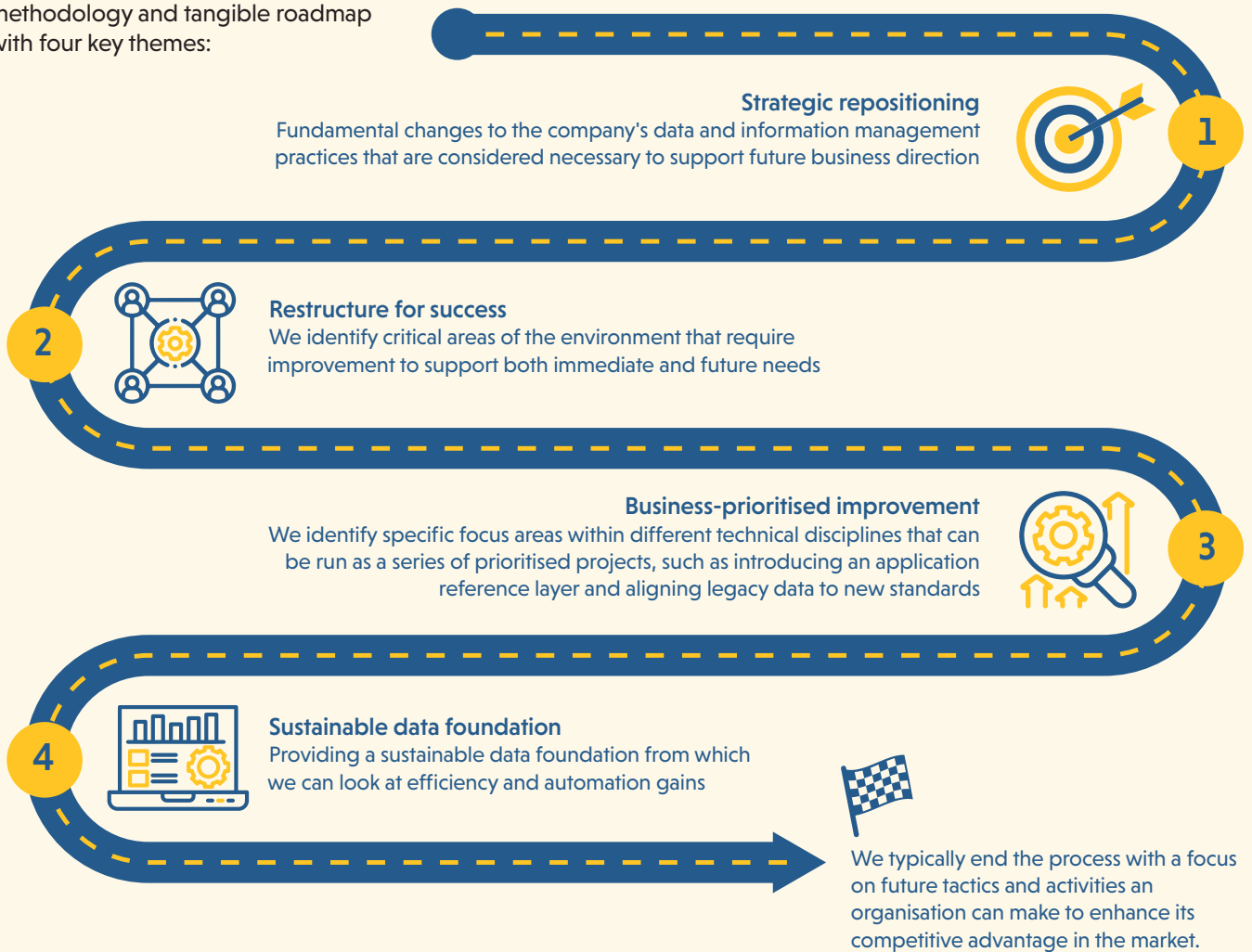
## STRATEGIC TRANSFORMATION FOR A DATA-DRIVEN FUTURE

Effective data and information management can enhance business performance, reduce technical uncertainty, and enable leveraging of cutting-edge technology.

With 30+ years of experience, Sword assists energy companies in defining their "desired future state" through a field-proven CSA, supported by deep domain expertise, resulting in a tangible roadmap for sustainable data management.

### A roadmap for success

Sword's CSA approach offers a proven methodology and tangible roadmap with four key themes:



## Key activities

The core of our approach revolves around the following key activities, which are carefully designed to foster a holistic understanding of an organisation's data and information maturity:



### 1 Stakeholder analysis and requirements gathering

End user insight and perspective coupled with business strategy is essential to determining the target state and roadmap prioritisation



### 2 Systems and architecture analysis

Understanding system strengths and weaknesses is core to determining the baseline position and potential accelerators



### 3 Comprehensive desktop data and information assessment

Adoption relies on understanding multi persona requirements, focusing value where it is felt



### 4 Workflow and process analysis

Identifying critical data flow weak points to target immediate value realisation



### 5 Organisational structure and strategy

Assessing the gap between current and future state operational capability, identifying tactical and strategic adjustments



### 6 Data governance and compliance maturity assessment

Delivering a forensic review of the existing IM governance framework: standards, procedures, polices

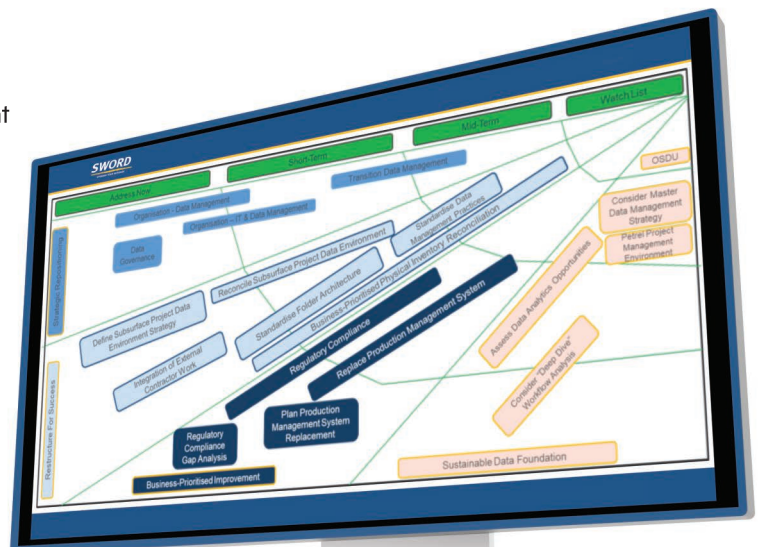
We conduct a combination of onsite workshops, interviews and guided desktop sessions with users, followed by offsite analysis **aligning our roadmap and recommendations** with the **organisation's strategy**, whilst **understanding the impact of changes** on individuals and their behaviours.

To assess an organisation's data and information management capability, we **validate it against our industry maturity model**. We examine processes against **industry standards and best practices**. We then offer recommendations and improvement activities that enhance the **value of data assets and boost user confidence**. We also provide information on resource requirements, required skill sets, estimated durations, and cost estimates.

## Achieving a competitive advantage

The CSA concludes by focusing on further activities that enhance the organisation's competitive advantage, enabling improved efficiency and automation.

Sword has successfully collaborated with over 20 energy companies, offering services ranging from end-to-end business support to focused subsurface workflows



Example prioritisation of recommendations